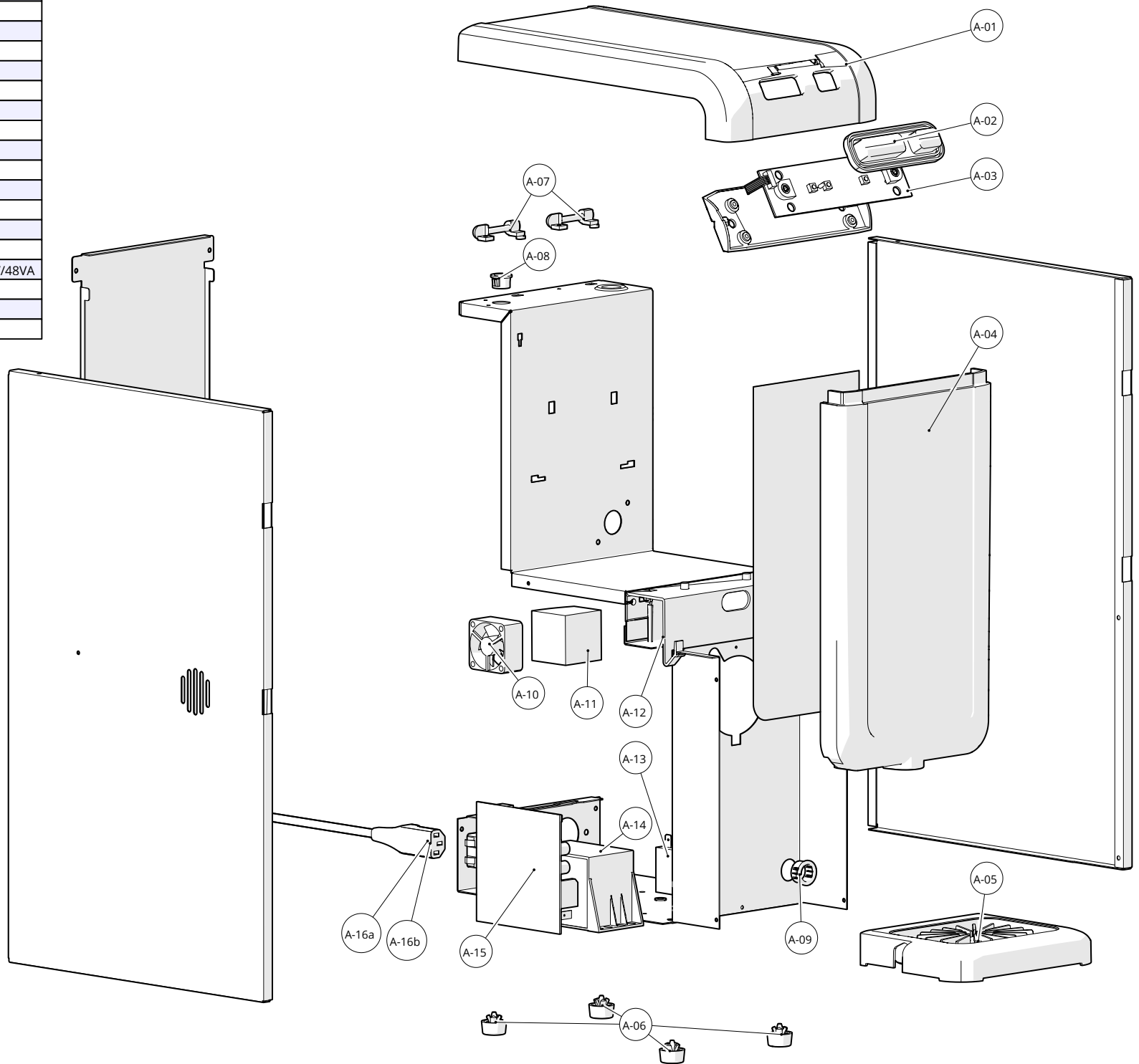
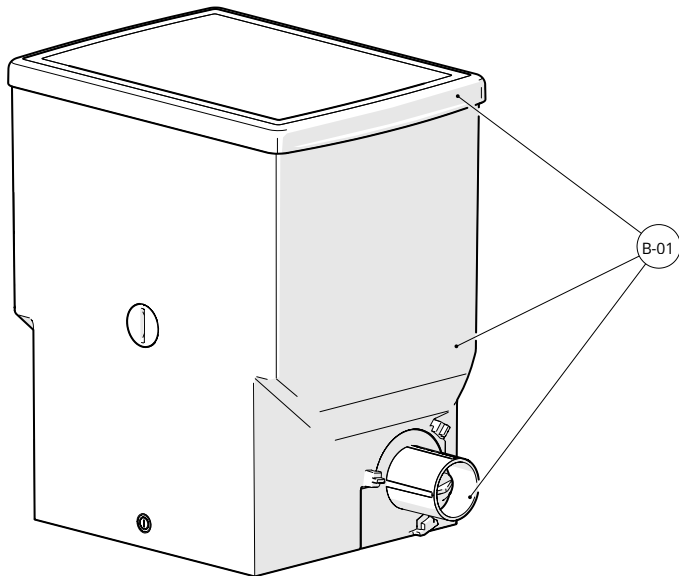
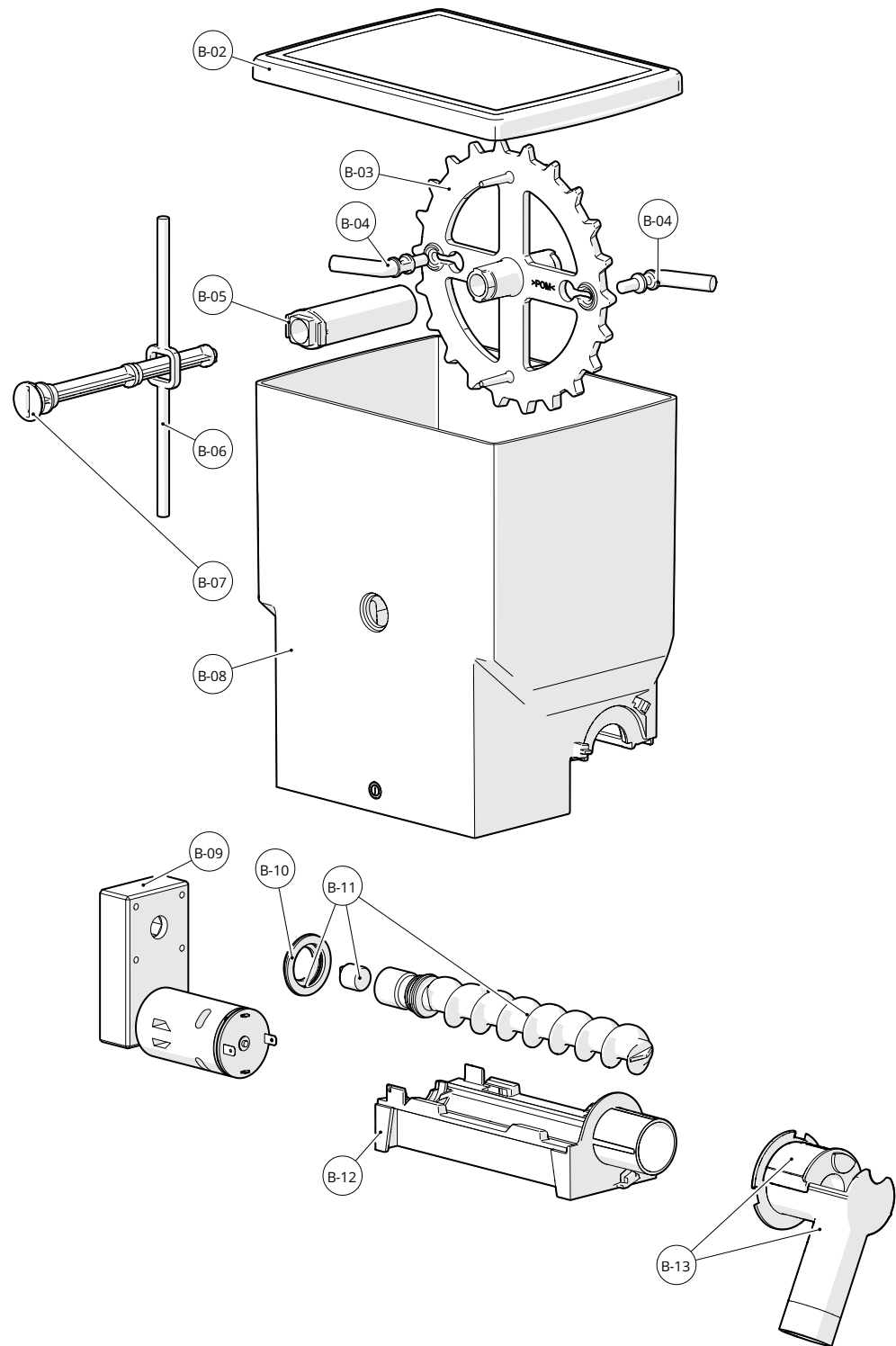


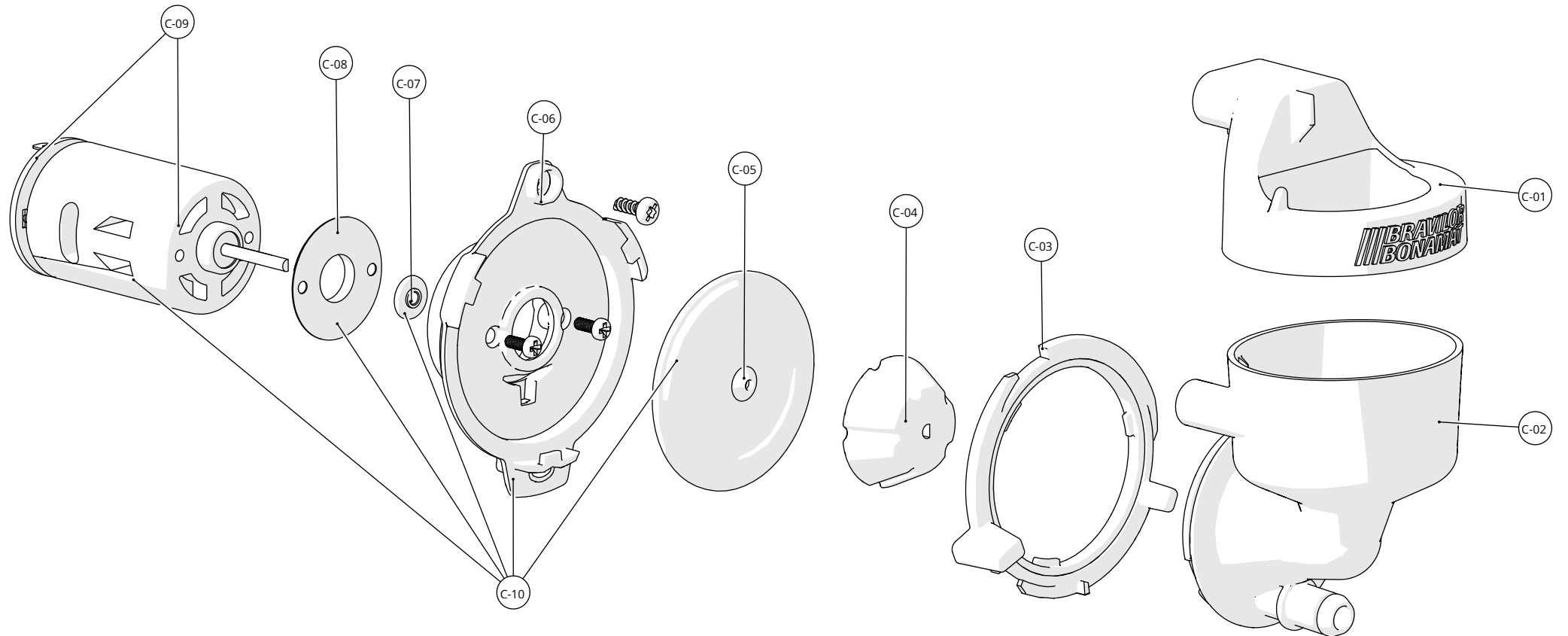
ID	Service parts	S-RS	Description
A-01	6.429.161.001	S	Lid
A-02	6.229.834.001	S	Keys
A-03	6.229.847.000	S	Keyboard Solo
A-04	6.429.160.000	S	Door
A-05	6.229.835.001	S	Drip tray
A-06	6.014.001.035	S	Rubber foot
A-07	6.229.014.001	S	Hinge
A-08	6.006.002.045	S	Inlet bush 14.3 mm
A-09	6.006.002.066	S	Inlet bush 17,4 mm
A-10	6.017.006.003	RS	Fan 24V
A-11	6.229.879.001	S	Fan filter
A-12	6.229.833.001	S	Fan cover </td
A-13	6.004.002.089	RS	Relay
A-14	6.004.011.082	RS	Transformer 240V 20V/48VA
A-15	6.229.843.000	S	Print Solo
A-16a	6.003.012.151	S	Connection cord (STD)
A-16b	6.003.011.071	S	Connection cord (UK)



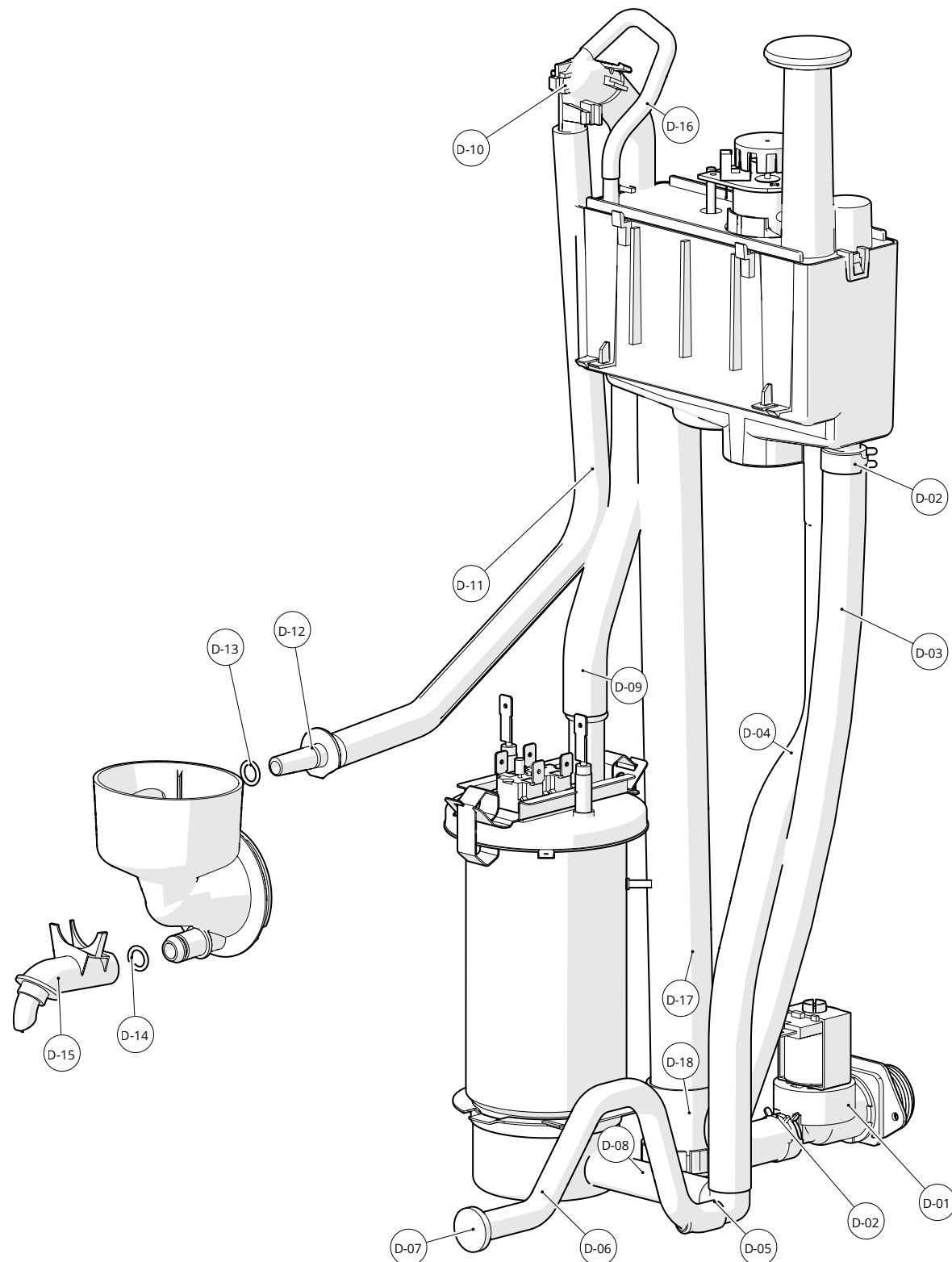
ID	Service parts	S-RS	Description			
B-01	6.000.229.197	S	Canister 134mm (complete)			
B-02	6.229.274.000	S	Lid 134mm			
B-03	6.329.477.001	S	Drive shaft			
B-04	6.329.478.001	S	Wiper			
B-05	6.329.543.001	S	Adapter pice wiper			
B-06	6.329.503.001	S	Wiper			
B-07	6.329.502.001	S	Axle canister 134 mm			
B-08	6.329.500.001	S	Canister casing			
B-09	6.030.070.017	RS	Canister motor			
B-10	6.329.479.001	S	Seal			
B-11	6.000.229.219	S	Worm (assy)			
B-12	6.329.474.001	S </tr <tr> <td>B-13</td> <td>6.429.132.000</td> <td>S</td> <td>Outlet</td> </tr>	B-13	6.429.132.000	S	Outlet
B-13	6.429.132.000	S	Outlet			



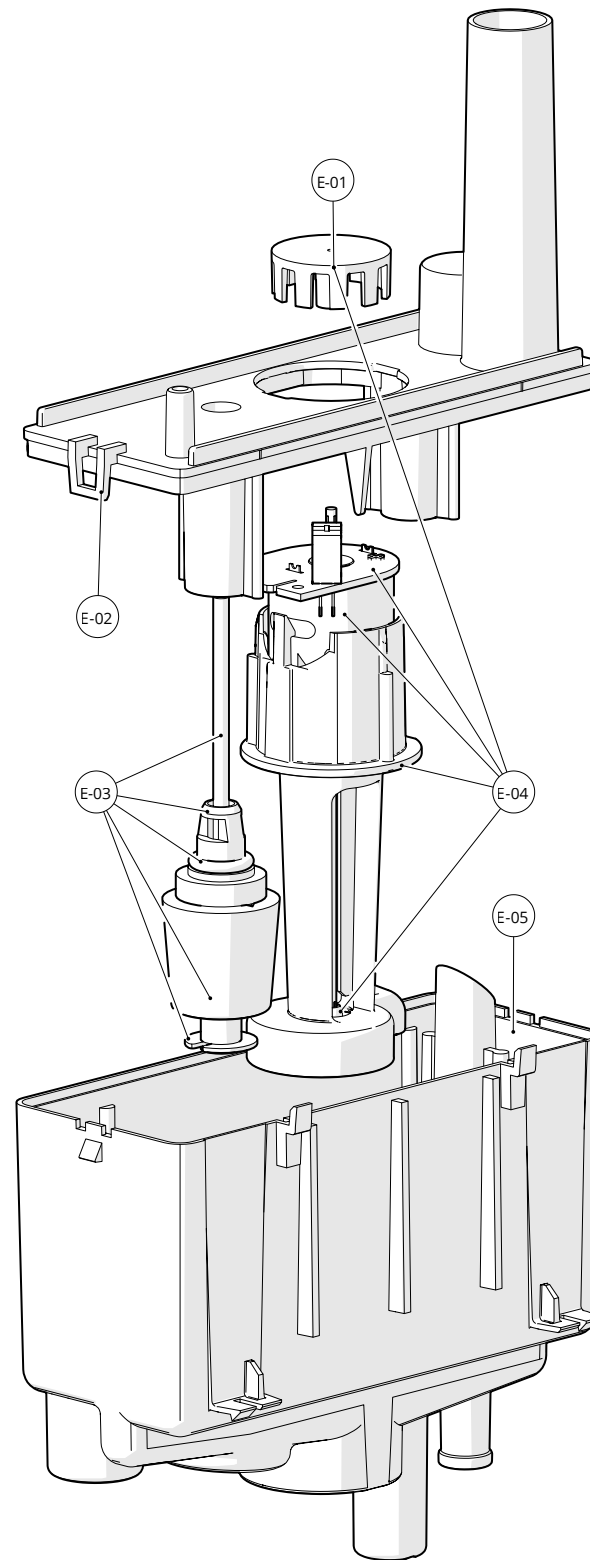
ID	Service parts	S-RS	Description
C-01	6.229.410.001	S	Condense reservoir
C-02	6.229.490.001	S	Mixing unit with outlet $\varnothing 6$
C-03	6.229.407.001	S	Fastening ring
C-04	6.229.595.001	S	Mixer
C-05	6.229.488.001	RS	Gasket mixing chamber
C-06	6.229.405.001	S	Motor holder
C-07	6.229.396.001	S	Ring mixer motor
C-08	6.229.943.001	S	Gasket mixer motor
C-09	6.030.070.016	RS	Mixer motor
C-10	6.000.229.055	RS	Mixer Motor Complete



ID	Service parts	S-RS	Description	mm
D-01	6.016.001.070	RS	Magnetic valve 2 l/min 24V	
D-02	6.001.079.003	S	Tube clamp 15.6 mm	
D-03	6.019.033.014	S	Silicone tube 9.5x3.0	350
D-04	6.019.033.013	S	Silicone tube 11.5x3.0	270
D-05	6.229.895.001	S	Reducing nipple	
D-06	6.229.032.001	S	Drain hose	190
D-07	6.006.002.018	S	Tightening plug	
D-08	6.019.033.014	S	Silicone tube 9.5x3.0	70
D-09	6.019.033.013	S	Silicone tube 11.5x3.0	270
D-10	6.229.428.001	S	De-aeration pipe	
D-11	6.019.033.004	S	Silicone tube 7.5x2.0	370
D-12	6.229.580.001	S	Water inlet 6mm	
D-13	6.011.001.152	S	O-ring 6.02x1.63	
D-14	6.011.001.073	S	O-ring 6x1.5	
D-15	6.229.529.001	S	Outlet 6 mm	
D-16	6.019.033.009	S	Silicone tube 7 x 4	120
D-17	6.401.045.001	DT	Overflow hose	320
D-18	6.229.760.001	S	Nipple	



ID	Service parts	S-RS	Description
E-01	6.229.594.001	S	Positioning wheel
E-02	6.229.334.001	S	Lid pumpfloat tank
E-03	6.229.546.001	S	Float
E-04	6.000.229.198	RS	Pump float tank 4000 rpm
E-05	6.229.335.001	S	Pumpfloat tank



ID	Service parts	S-RS	Description
F-01	6.000.229.088	RS	Flow boiler 240V/2160W
F-02	6.016.008.057	RS	High temperature safety switch
F-03	6.229.871.000	RS	Heating element 240V/2160W
F-04	6.011.001.082	S	O-ring 74.5x3
F-05	6.301.045.001	S	Spring
F-06	6.236.188.000	RS	Temperature sensor (assy)

